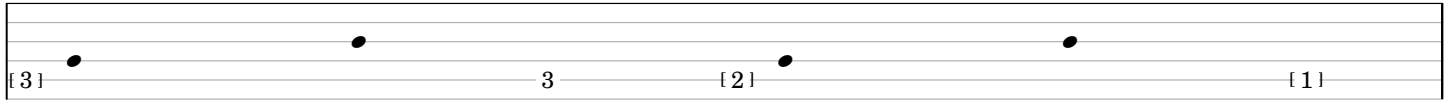


# *ostinato and interrupt*

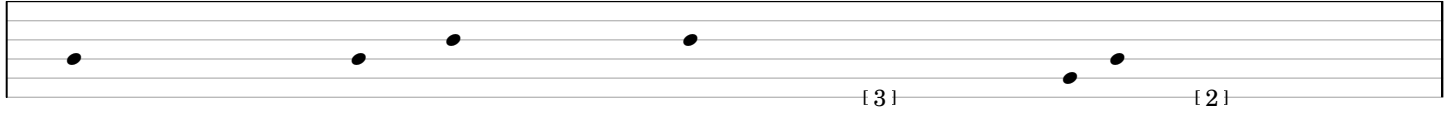
ensemble part 1

michael winter (mexico city, mx; 2017)  
version generated: 2017.08.23

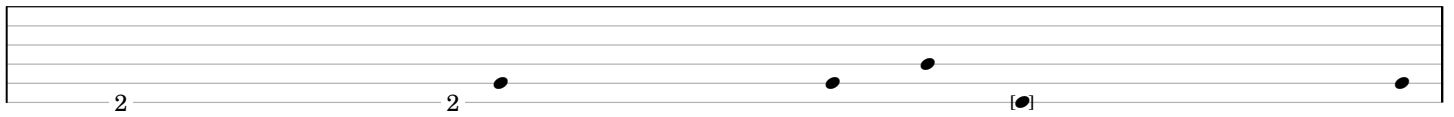
0'12"



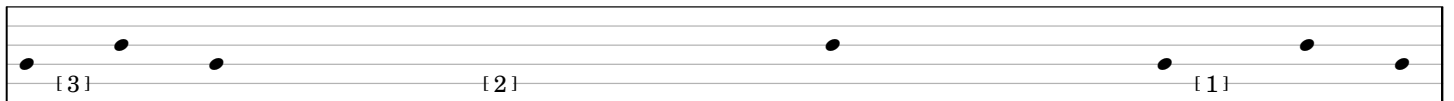
0'24"



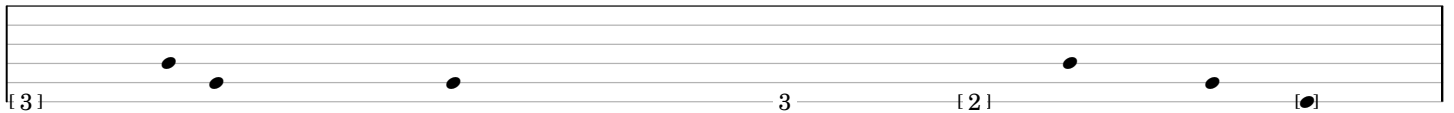
0'36"



0'48"



1'00"

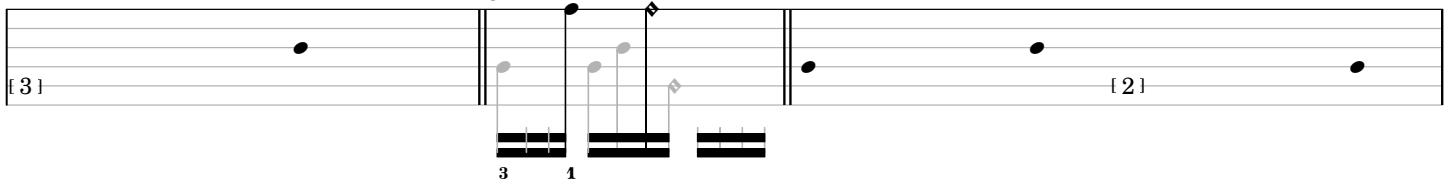


1'12"

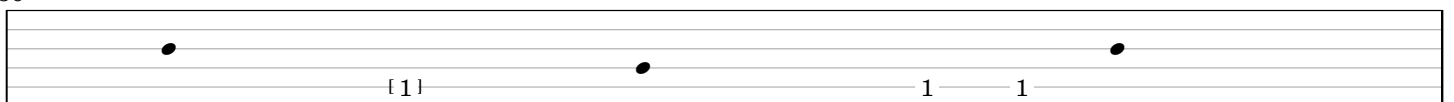


1'24"

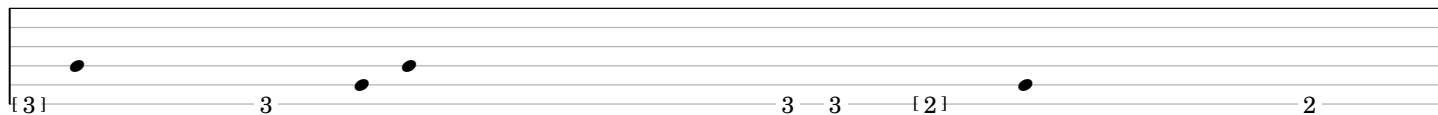
1'28"



1'36"

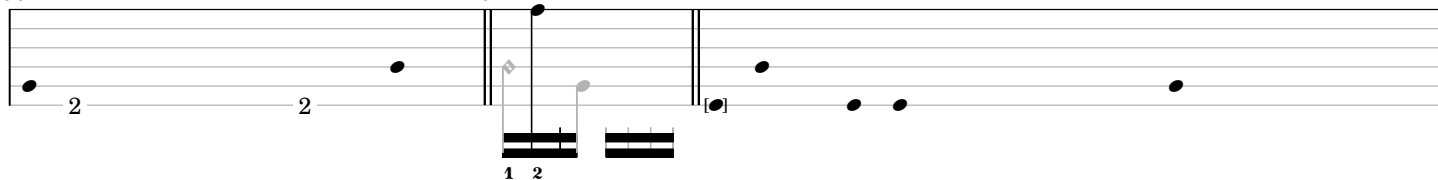


1'48"

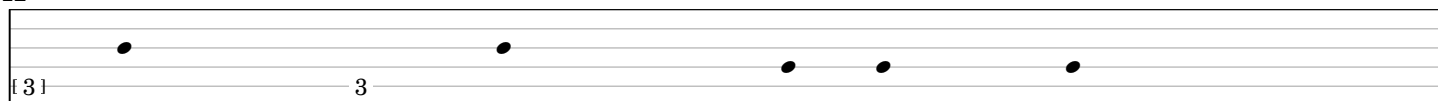


2'00"

2'04"



2'12"

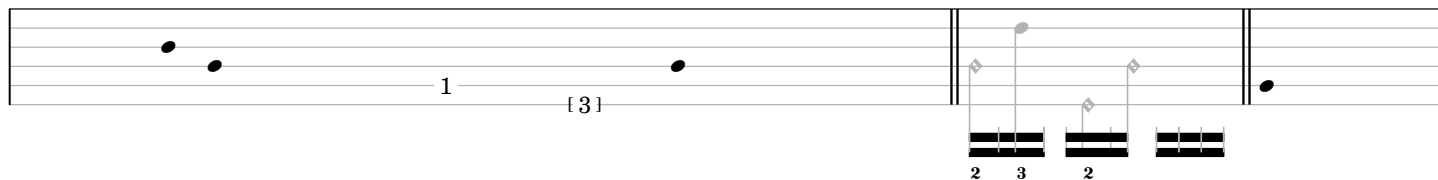


2'24"

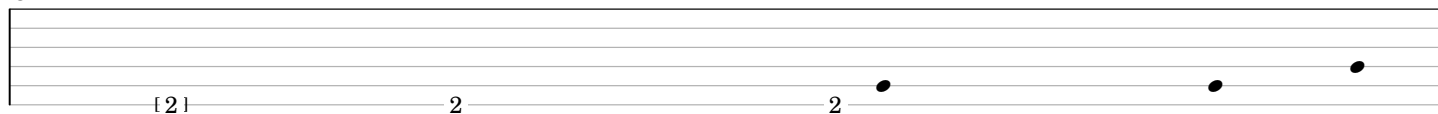


2'36"

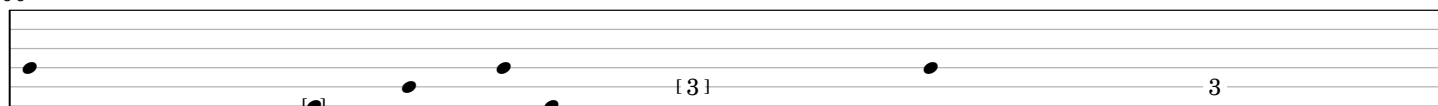
2'44"



2'48"

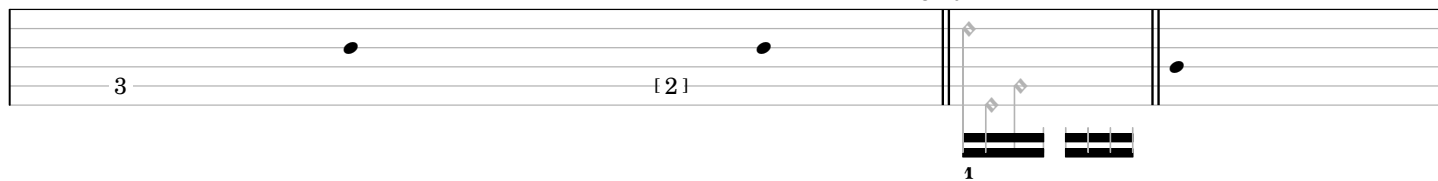


3'00"



3'12"

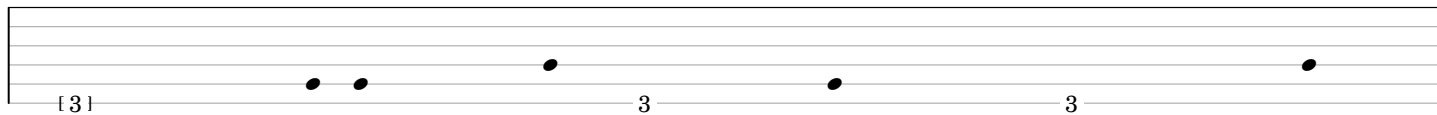
3'20"



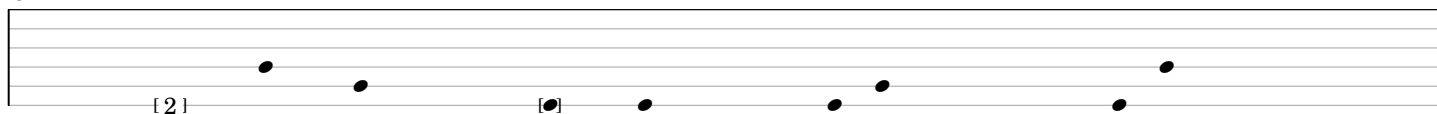
3'24"



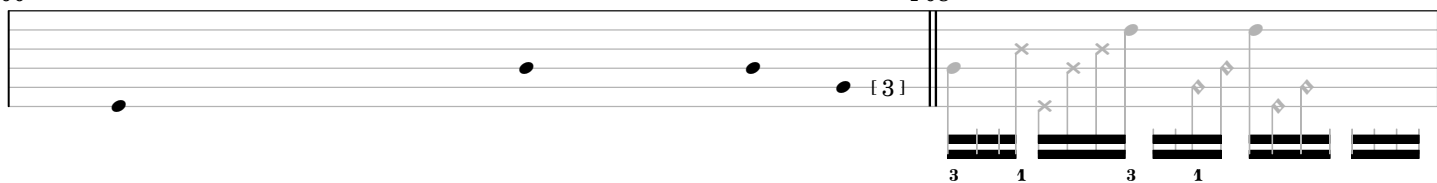
3'36"



3'48"

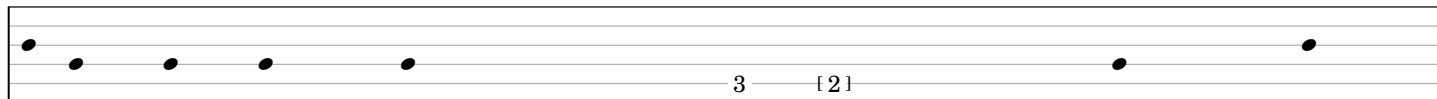


4'00"



4'08"

4'12"



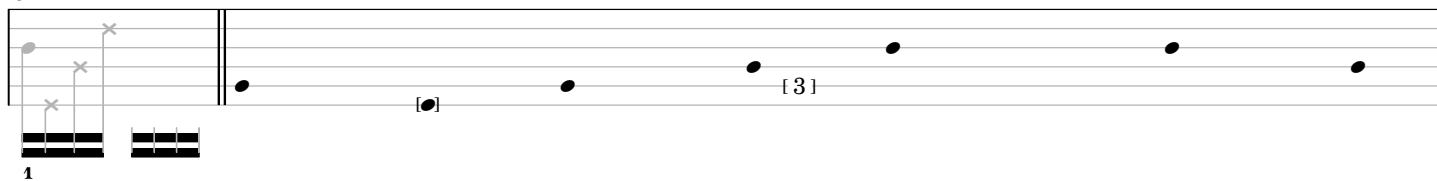
4'24"



4'36"

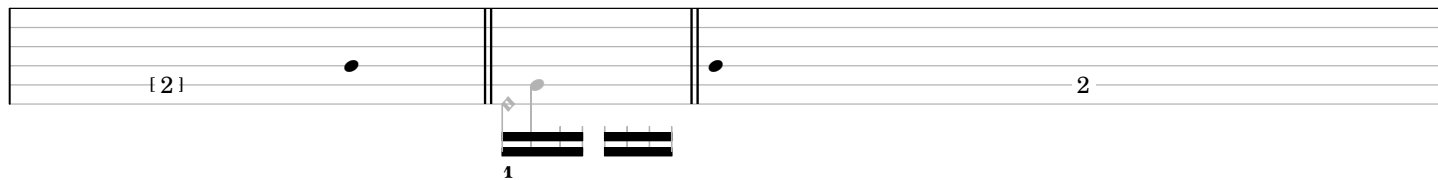


4'48"

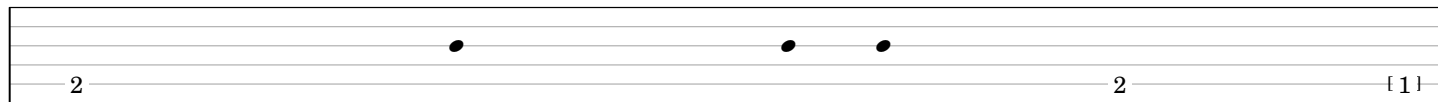


5'00"

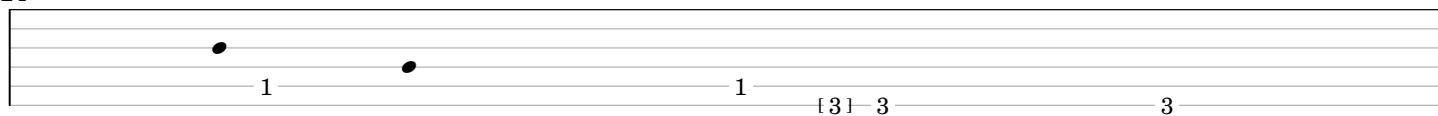
5'04"



5'12"

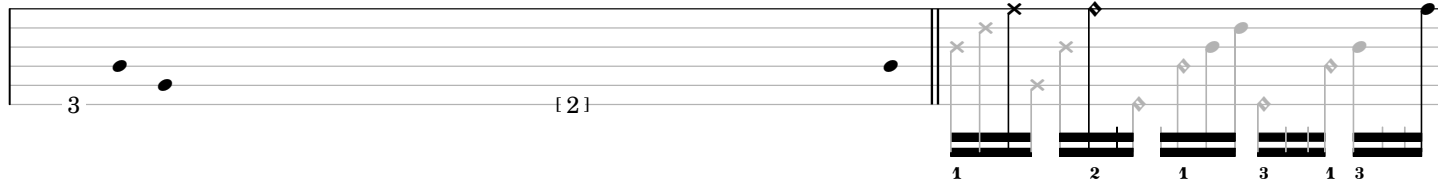


5'24"

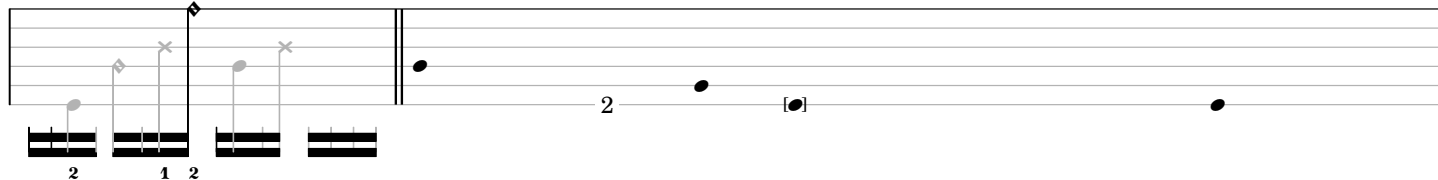


5'36"

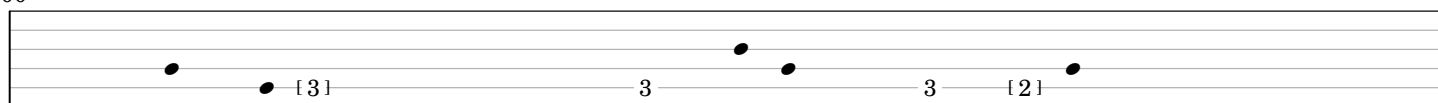
5'44"



5'48"

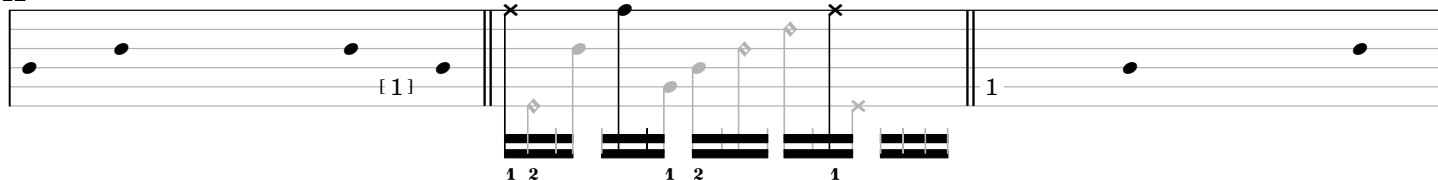


6'00"

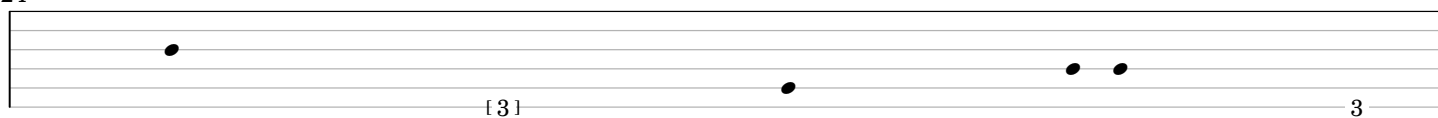


6'12"

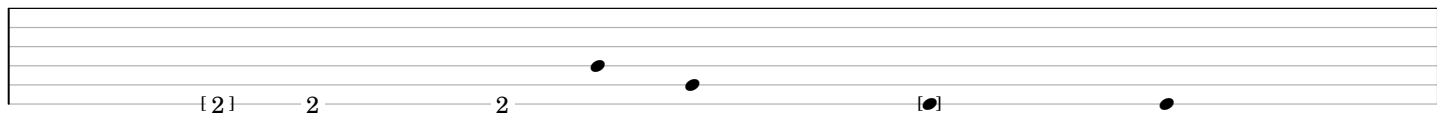
6'16"



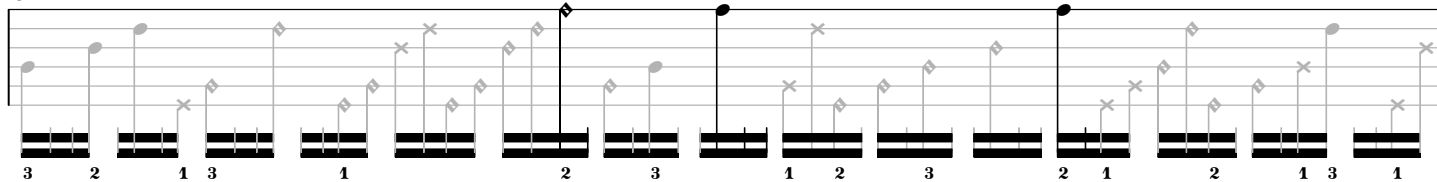
6'24"



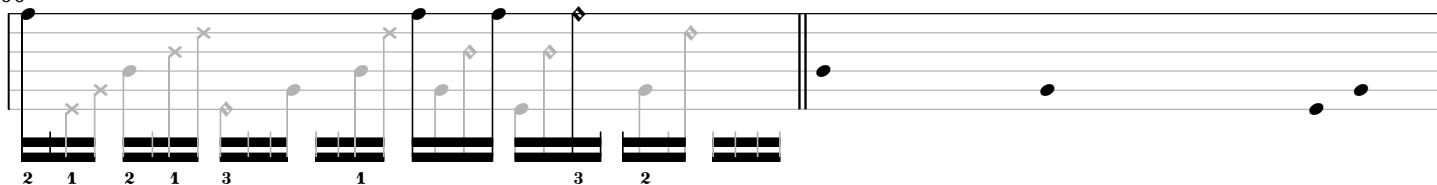
6'36"



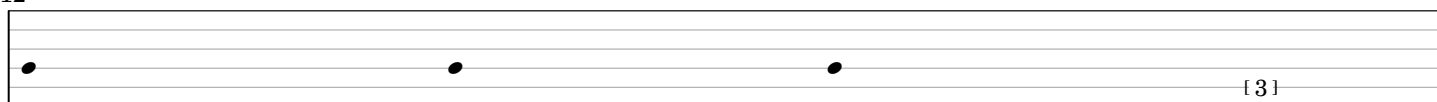
6'48"



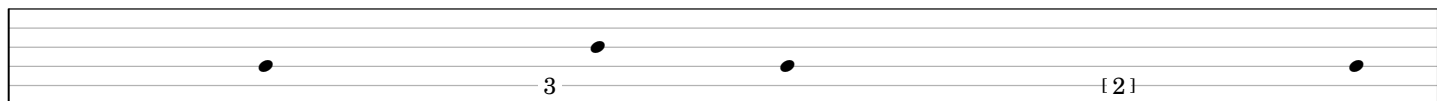
7'00"



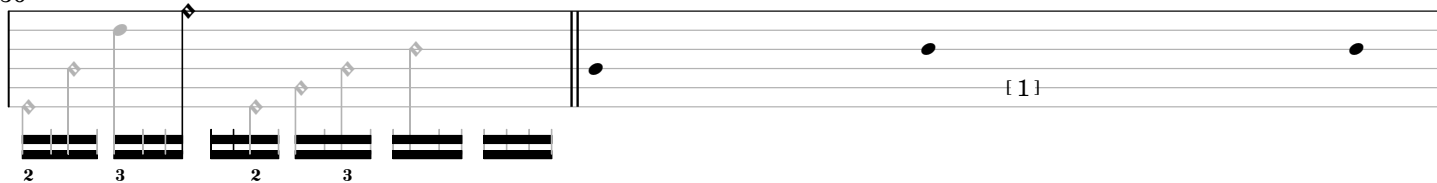
7'12"



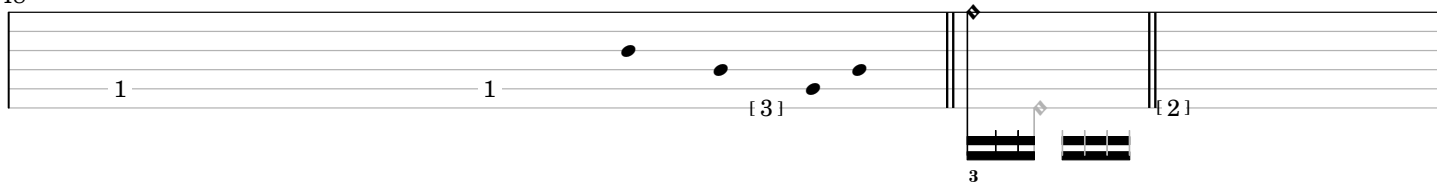
7'24"



7'36"



7'48"



7'56"

8'00"



8'12"

Musical notation for 8'12". The staff shows a sequence of notes with various articulations (diamonds, crosses) and fingerings (3, 1, 3, 1, 3, 1). A double bar line is present. The notation includes a '3' below the staff and a '3' above the staff.

8'24"

Musical notation for 8'24". The staff shows a sequence of notes with fingerings (2, 2) and a double bar line.

8'36"

8'40"

Musical notation for 8'36" and 8'40". The staff shows a sequence of notes with various articulations (diamonds, crosses) and fingerings (1, 2, 1, 3, 1, 2, 1, 2, 1, 3). A double bar line is present.

8'48"

Musical notation for 8'48". The staff shows a sequence of notes with fingerings (3, 3) and a double bar line.

9'00"

9'04"

Musical notation for 9'00" and 9'04". The staff shows a sequence of notes with various articulations (diamonds, crosses) and fingerings (2, 1, 3, 1, 2). A double bar line is present.

9'12"

Musical notation for 9'12". The staff shows a sequence of notes.

9'24"

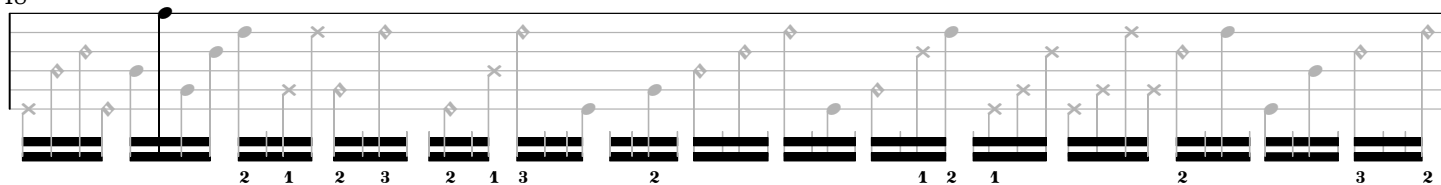
Musical notation for 9'24". The staff shows a sequence of notes.

9'36"

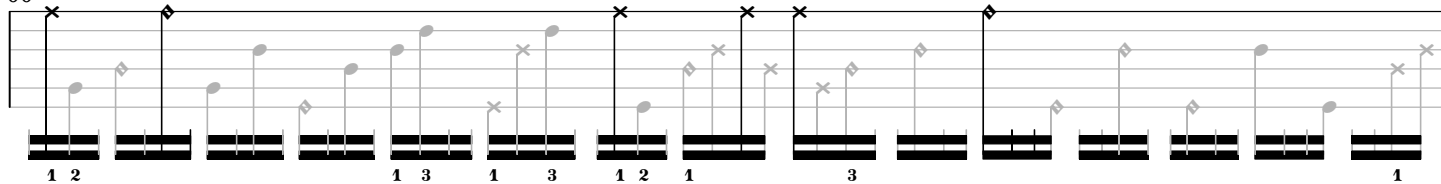
9'44"

Musical notation for 9'36" and 9'44". The staff shows a sequence of notes with various articulations (diamonds, crosses) and fingerings (3, 1, 2, 1). A double bar line is present.

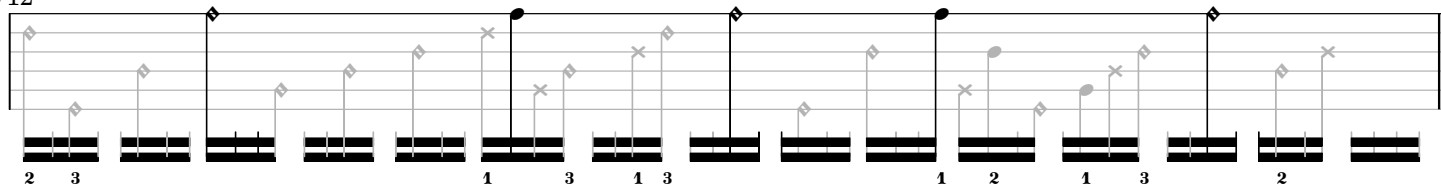
9'48"



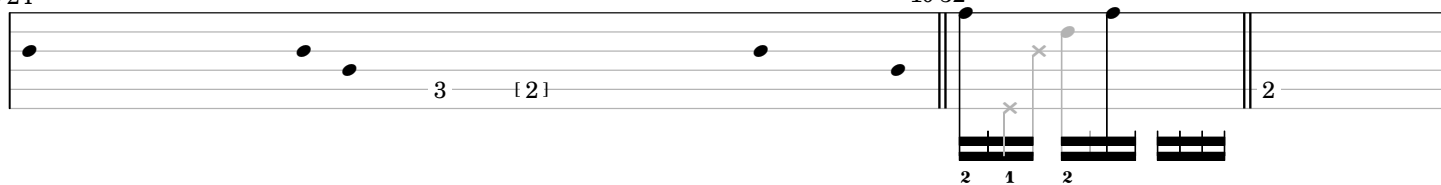
10'00"



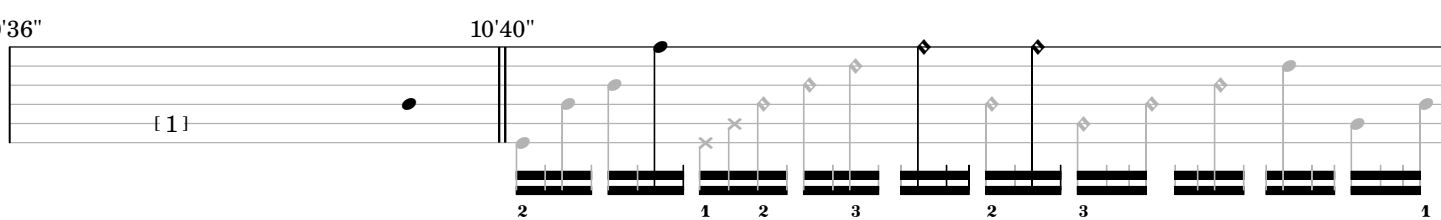
10'12"



10'24"

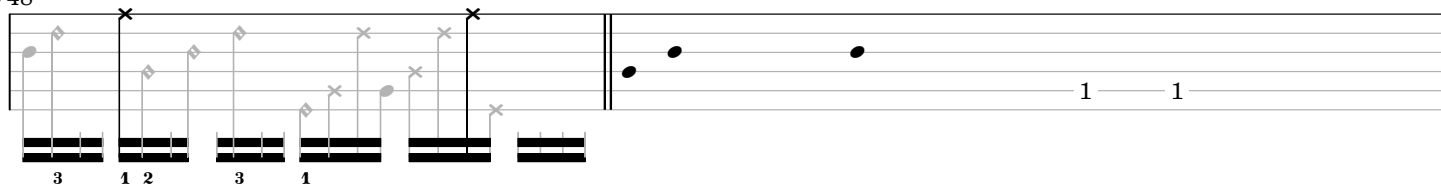


10'36"

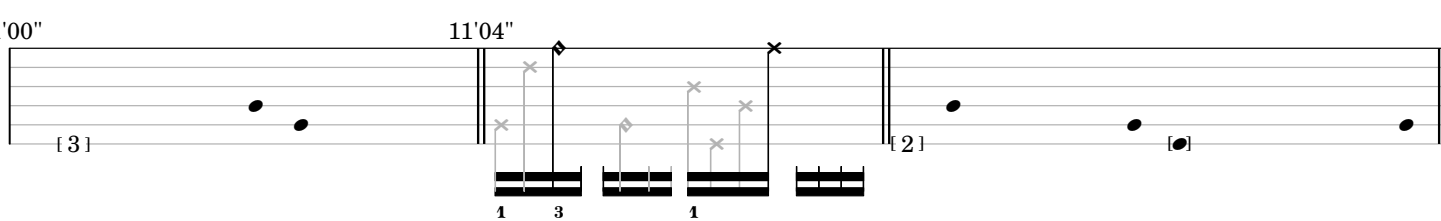


10'40"

10'48"

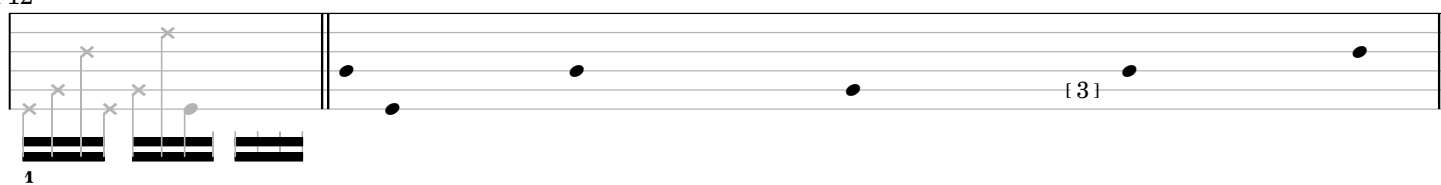


11'00"



11'04"

11'12"



11'24"

Musical notation for 11'24". The staff shows a sequence of notes with various ornaments (diamonds, crosses) and fingerings (2, 1, 3, 2, 3, 2, 1, 3, 1, 2, 1). The notation includes a double bar line and a repeat sign.

11'36"

Musical notation for 11'36". The staff shows a sequence of notes with various ornaments (diamonds, crosses) and fingerings (1, 2, 1). The notation includes a double bar line and a repeat sign.

11'44"

Musical notation for 11'44". The staff shows a sequence of notes with various ornaments (diamonds, crosses) and fingerings (1, 3, 1). The notation includes a double bar line and a repeat sign.

11'48"

Musical notation for 11'48". The staff shows a sequence of notes with various ornaments (diamonds, crosses) and fingerings (3, [2]). The notation includes a double bar line and a repeat sign.

12'00"

Musical notation for 12'00". The staff shows a sequence of notes with various ornaments (diamonds, crosses) and fingerings (1, 2, 1, 2, 1, 2, 1, 2, 2, 1, 2, 1). The notation includes a double bar line and a repeat sign.

12'12"

Musical notation for 12'12". The staff shows a sequence of notes with various ornaments (diamonds, crosses) and fingerings ([3]). The notation includes a double bar line and a repeat sign.

12'24"

Musical notation for 12'24". The staff shows a sequence of notes with various ornaments (diamonds, crosses) and fingerings (2, 1). The notation includes a double bar line and a repeat sign.

12'36"

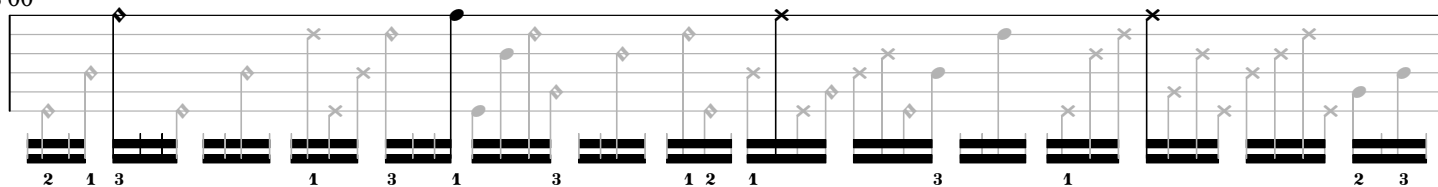
Musical notation for 12'36". The staff shows a sequence of notes with various ornaments (diamonds, crosses) and fingerings (3, 1, 2, [1], 1). The notation includes a double bar line and a repeat sign.

12'48"

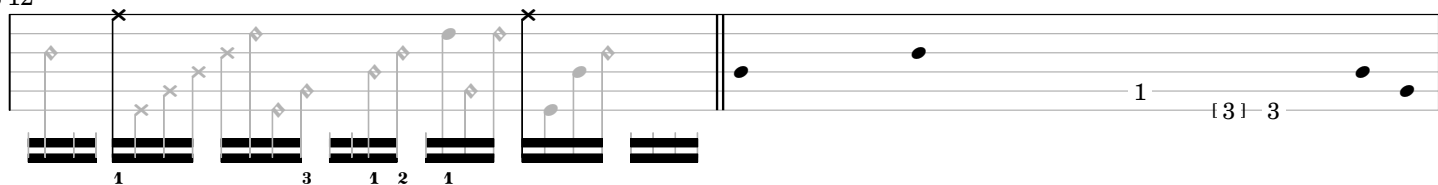
Musical notation for 12'48". The staff shows a sequence of notes with various ornaments (diamonds, crosses) and fingerings (2, 3, 1, 2, 1, 3, 1, 3, 1, 3, 1, 3). The notation includes a double bar line and a repeat sign.



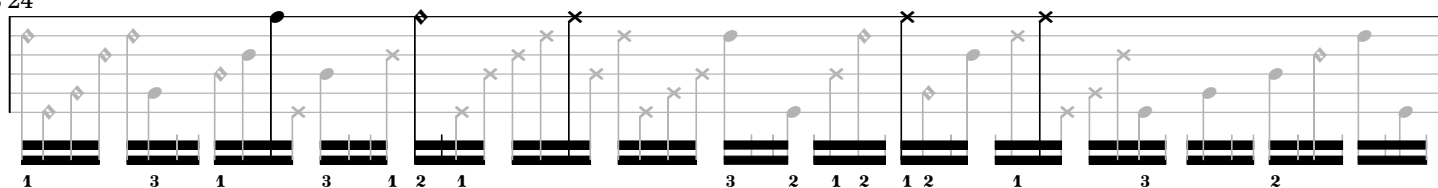
13'00"



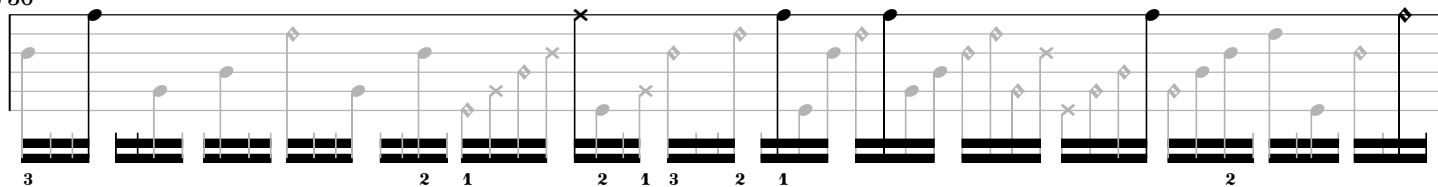
13'12"



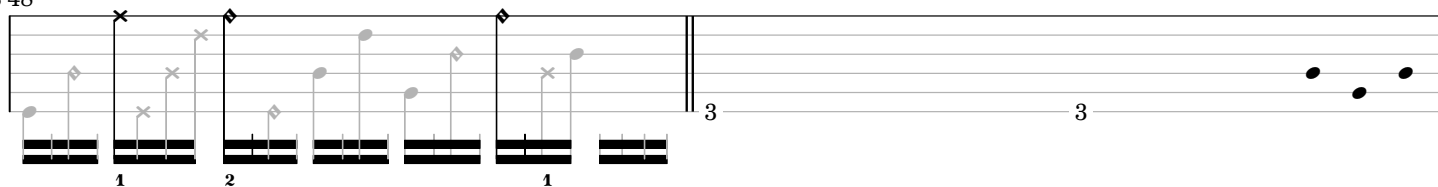
13'24"



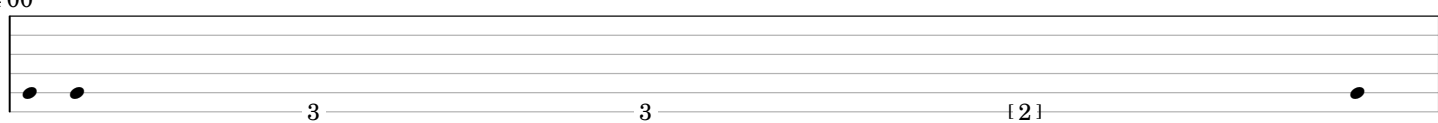
13'36"



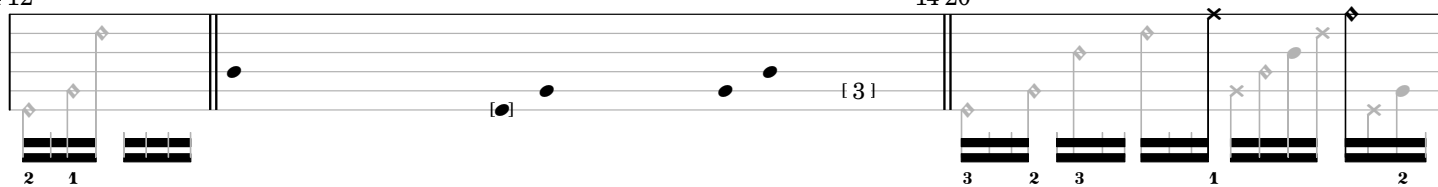
13'48"



14'00"

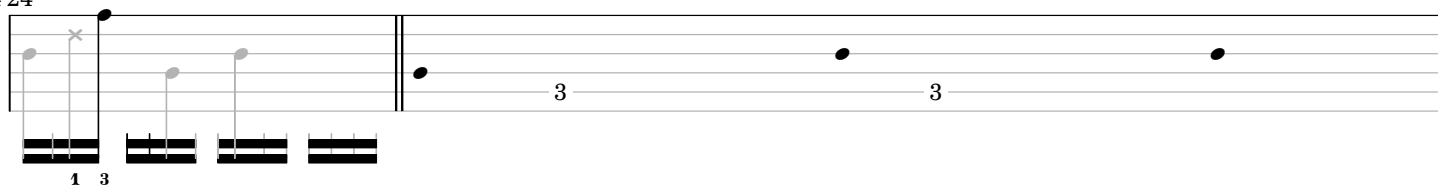


14'12"



14'20"

14'24"



14'36"

Musical notation for 14'36". The staff shows two whole notes, followed by a measure with a triplet of eighth notes and a measure with a pair of eighth notes in brackets. A double bar line follows. The notation for 14'44" begins with a triplet of eighth notes, followed by measures with eighth notes and sixteenth notes, some marked with 'x' and diamond symbols. Fingerings 3, 1, 2, 3, 1, 2 are indicated below the notes.

14'44"

14'48"

Musical notation for 14'48". The staff shows a sequence of eighth and sixteenth notes, some marked with 'x' and diamond symbols. Fingerings 1, 2, 1, 2, 3, 2, 3, 1, 2, 1, 2, 3, 2, 1 are indicated below the notes.

15'00"

Musical notation for 15'00". The staff shows a sequence of eighth and sixteenth notes, some marked with 'x' and diamond symbols. Fingerings 3, 2, 1, 2, 1, 2, 3, 1, 3, 2, 1, 3, 3, 2 are indicated below the notes.

15'12"

Musical notation for 15'12". The staff shows a sequence of eighth and sixteenth notes, some marked with 'x' and diamond symbols. Fingerings 3, 1, 2, 1, 3, 2, 3, 2 are indicated below the notes. A double bar line follows, with a measure containing a whole note and a measure with a pair of eighth notes in brackets, followed by a final measure with a single eighth note.

15'24"

Musical notation for 15'24". The staff shows a sequence of eighth and sixteenth notes, some marked with 'x' and diamond symbols. Fingerings 2, 1, 2, 1, 2, 1, 3, 1, 2, 1, 3, 3 are indicated below the notes. A double bar line follows, with a measure containing a whole note and a measure with a pair of eighth notes in brackets, followed by a final measure with a single eighth note.

15'36"

Musical notation for 15'36". The staff shows a sequence of whole notes, with a pair of eighth notes in brackets and a final measure with a single eighth note in brackets.